



MONTHLY MEMBERSHIP PROGRESS REPORT

District 2 S1

Results as of: 5/31/2016

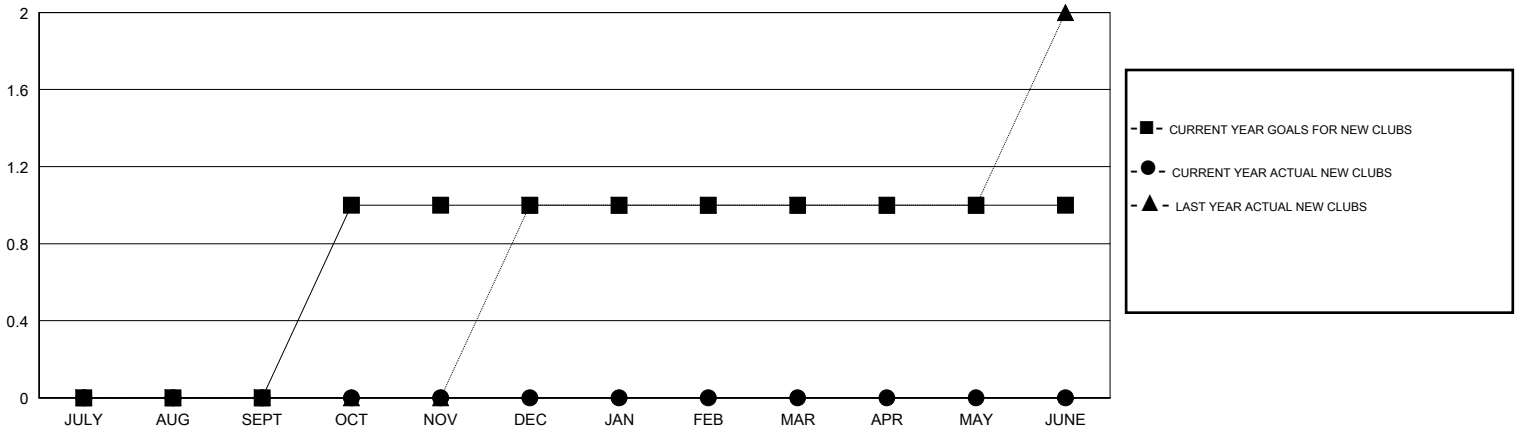
GMT: HAL GRIFFIN

LOCATION TEXAS

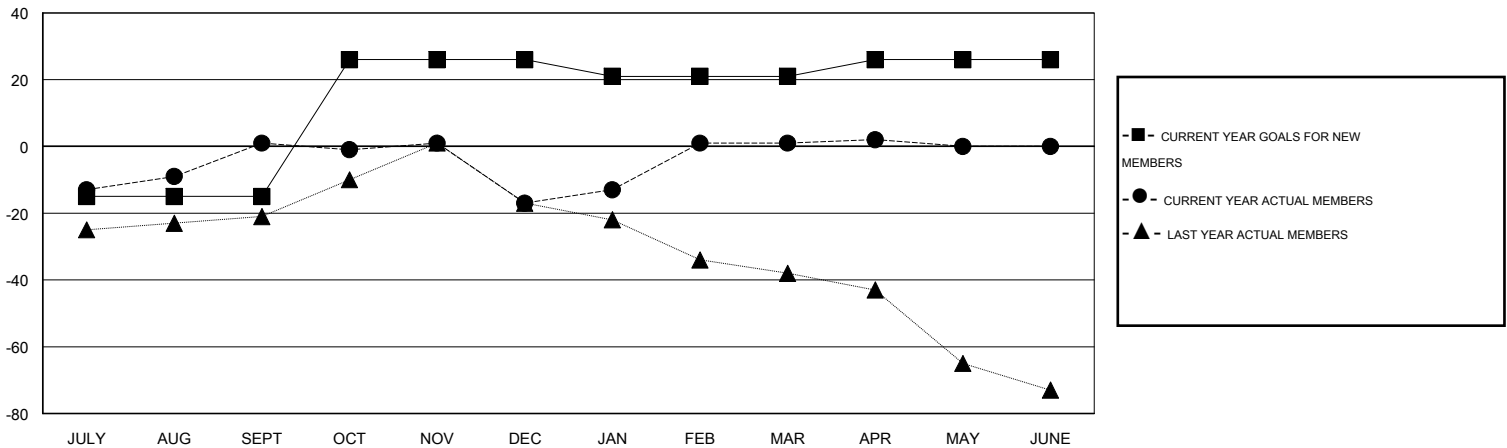
GMT CA 1

Clubs					Members				
RESULTS FOR 2015-2016					RESULTS FOR 2015-2016				
QUARTER	NEW CLUB GOAL	NEW CLUBS	DROPPED CLUBS	NET GAIN/LOSS	QUARTER	NEW MEMBER GOAL	CHARTER AND NEW MEMBERS ADDED	DROPPED MEMBERS	NET GAIN/LOSS
JULY/AUG/SEPT	0	0	0	0	JULY/AUG/SEPT	-15	60	59	1
OCT/NOV/DEC	1	0	1	-1	OCT/NOV/DEC	41	46	64	-18
JAN/FEB/MAR	0	0	0	0	JAN/FEB/MAR	-5	89	71	18
APR/MAY/JUNE	0	0	0	0	APR/MAY/JUNE	5	37	38	-1

GOALS AND ACTUAL NEW CLUBS CUMULATIVE



GOALS AND ACTUAL MEMBERS CUMULATIVE



DROPPED CLUBS: 1	37 CLUBS OF 53 ADDED 1 OR MORE NEW MEMBERS	<u>GENDER DISTRIBUTION</u>	
		MALE	1,264 (72.90%)
<u>DROPPED MEMBERS</u>	CLICK HERE FOR HEALTH ASSESSMENT DATA	FEMALE	470 (27.10%)
DECEASED		17	FAMILY UNIT MEMBERS
CLUB CANCELLED	14	HEAD OF HOUSEHOLD	124
OTHER	201	NON-HEAD OF HOUSEHOLD	130
TOTAL	232		